



laurie matthews

ADJUNCT FACULTY, HISTORIC PRESERVATION & LANDSCAPE ARCHITECTURE |
UNIVERSITY OF OREGON

DIRECTOR OF PRESERVATION PLANNING & DESIGN | MIG

LMATTHEW@UOREGON.EDU | LAURIEM@MIGCOM.COM

Laurie Matthews is a nationally recognized expert in cultural landscape preservation planning and design. Her work has helped rehabilitate some of the most iconic and thought-provoking historic places in the country such as Yosemite National Park, Willamette Falls, and Point Reyes National Seashore. Laurie is fascinated by the complexities and stories associated with landscapes and the history they reveal. Her work is guided by the principle that landscape preservation requires managing rather than halting change, and works to achieve that by revealing stories and processes inherent in landscapes and re-invigorating their position in the present.

She is currently researching 16th century British landscapes associated with four generations of women and how these places served critical roles in their lives as places of refuge, rebellion, and revelry; connections between 16th century Italian and British landscapes; and archetypal landscape features and forms associated with landscape mythologies and animistic and pantheistic beliefs. She is also expanding ways we document sense of place, experimenting with techniques for capturing color of landscapes.

Her work and practice has garnered many national and regional awards and she speaks frequently at local, regional and national conferences on cultural landscapes. She is former President of the Oregon Chapter of the American Society of Landscape Architects (ASLA), is the Historic American Landscape Survey (HALS) representative for Oregon, and was elected to the ASLA Council of Fellows in 2023.

EDUCATION

- Master of Landscape Architecture, University of Oregon, 2001
- Bachelor of Landscape Architecture, University of Oregon, 2000
- Bachelor of Arts, Fine Arts, Lewis & Clark College, 1992

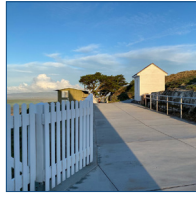
SELECTED WORK EXPERIENCE

- Director of Preservation Planning and Design, MIG, Portland, Oregon. 2007-present
- Instructor, Department of Historic Preservation, University of Oregon, Portland, Oregon. 2017-present
- Adjunct Faculty of Professional Practice, Department of Landscape Architecture, University of Oregon. 2017-present
- Historical Landscape Architect, Cultural Landscapes Inventory Regional Coordinator, Olmsted Center for Landscape Preservation, National Park Service, Boston, Massachusetts. 2003-2007
- Project Associate, Heritage Landscapes, Norwalk, Connecticut. 2001-2003

PROJECT EXPERIENCE

ALASKA

- Mt. McKinley Park Road Cultural Landscape Report, Denali National Park and Preserve (MIG)
- Brooks Camp Cultural Landscape Report, Katmai National Park and Preserve (MIG)
- White Pass Historic Transportation Corridor Cultural Landscape Report, Klondike Gold Rush National Historical Park (MIG)



laurie matthews

ADJUNCT FACULTY, HISTORIC PRESERVATION & LANDSCAPE ARCHITECTURE |
UNIVERSITY OF OREGON

DIRECTOR OF PRESERVATION PLANNING & DESIGN | MIG

LMATTHEW@UOREGON.EDU | LAURIEM@MIGCOM.COM

- Valley of Ten Thousand Smokes Road Cultural Landscape Report, Katmai National Park and Preserve (MIG)
- Denali Park Road Patrol Cabins Cultural Landscape Inventory, Denali National Park and Preserve (MIG)
- Rasmussen-Kennedy Homestead Cultural Landscape Inventory, Lake Clark National Park and Preserve (MIG)
- Chilkoot Trail Cultural Landscape Report, Klondike Gold Rush National Historical Park (MIG)

CALIFORNIA

- Curry Village Orchard Parking Lot Rehabilitation Plan, Yosemite National Park (MIG)
- Yosemite Lodge Cultural Landscape Report, Yosemite National Park (MIG)
- Capitol Park Cultural Landscape Treatment Plan and Design Guidelines, Sacramento (MIG)
- Scotty's Castle Cultural Landscape Report, Death Valley National Park (MIG)
- Curry Village Cabins Rehabilitation, Yosemite National Park (MIG)
- Historic Ranches Districts Cultural Landscape Report, Point Reyes National Seashore (MIG)
- Point Reyes Lifeboat Station Cultural Landscape Report, Point Reyes National Seashore (MIG)
- Point Reyes Light Station Cultural Landscape Report and Schematic Design, Point Reyes National Seashore (MIG)
- Scotty's Castle Historic American Landscape Survey, Death Valley National Park (MIG)
- Civic Center Historic District Cultural Landscape Inventory, San Francisco (MIG)
- Santa Rosa Island Cultural Landscape Report, Channel Islands National Park (MIG)
- Mendocino Woodlands Cultural Landscape Report, Mendocino (MIG)
- Hearst San Simeon State Historical Monument Cultural Landscape Report, San Simeon (NPS)
- Lodgepole Developed Area Cultural Landscape Inventory, Sequoia National Park (MIG)
- Curry Village Boys Town Determination of Eligibility, Yosemite National Park (MIG)
- Yosemite Valley Utilities Maintenance Area Plan and Rehabilitation, Yosemite National Park (MIG)
- Cedar Grove Road Determination of Eligibility, Sequoia-Kings Canyon National Park (MIG)
- Portsmouth Square Historic Resource Evaluation, San Francisco (MIG)
- Willie 'Woo Woo' Wong Park Historic Resource Evaluation, San Francisco (MIG)
- Toley Lake Cultural Landscape Inventory and Interpretive Plan, Sonoma County (MIG)
- Fremont Park Historic Resource Assessment, Santa Rosa (MIG)



laurie matthews

ADJUNCT FACULTY, HISTORIC PRESERVATION & LANDSCAPE ARCHITECTURE |
UNIVERSITY OF OREGON

DIRECTOR OF PRESERVATION PLANNING & DESIGN | MIG

LMATTHEW@UOREGON.EDU | LAURIEM@MIGCOM.COM

COLORADO

- Sand Creek Massacre Cultural Landscape Inventory, Sand Creek Massacre National Historic Site (MIG)
- National Western Center Placemaking Study, Denver (MIG)
- Headquarters Loop Historic District Cultural Landscape Report, Mesa Verde National Park (MIG)

CONNECTICUT

- Weir Farm Cultural Landscape Inventory, Weir Farm National Historic Site (NPS)

HAWAII

- Washington Place Cultural Landscape Report, Honolulu (MIG)

IDAHO

- Minidoka National Historic Site Development Concept Plan and Visitor Center Rehabilitation (MIG)

MARYLAND

- Eutaw Place Rehabilitation, Baltimore (Heritage Landscapes)
- Latrobe Park Master Plan, Baltimore (Heritage Landscapes)

MASSACHUSETTS

- Springfield Armory National Historic Site Cultural Landscape Inventory (NPS)
- Cultural Landscape Interpretive Brochure Series, Frederick Law Olmsted National Historic Site (NPS)

MINNESOTA

- Oliver H. Kelley Farm Cultural Landscape Report and Master Plan, Elk River (MIG)

MISSOURI

- Wildwood Historic Preservation Plan, Wildwood (MIG)

MONTANA

- Ewing-Snell Ranch Cultural Landscape Inventory, Bighorn Canyon National Recreation Area (MIG)
- Hillsboro Ranch Cultural Landscape Inventory, Bighorn Canyon National Recreation Area (MIG)
- Greasy Grass Battlefield Cultural Landscape Report, Little Bighorn Battlefield National Monument (MIG)

NEW JERSEY

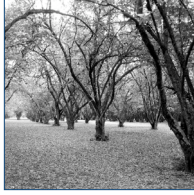
- Cross Estate Cultural Landscape Inventory, Morristown National Historical Park (NPS)

NEW MEXICO

- Pecos Cultural Landscape Report, Pecos National Historical Park (UO)
- Fort Union Cultural Landscape Report, Fort Union National Monument (UO)
- White Sands Administrative Historic District Historic Structures Report, White Sands National Park (MIG)

NEW YORK

- Ellis Island National Monument Cultural Landscape Inventory (NPS)



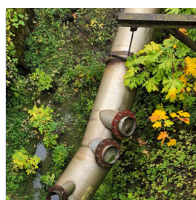
laurie matthews

ADJUNCT FACULTY, HISTORIC PRESERVATION & LANDSCAPE ARCHITECTURE |
UNIVERSITY OF OREGON

DIRECTOR OF PRESERVATION PLANNING & DESIGN | MIG

LMATTHEW@UOREGON.EDU | LAURIEM@MIGCOM.COM

- Mt. Lebanon Shaker Village Cultural Landscape Report, New Lebanon (Heritage Landscapes)
 - John Jay Estate/Marshlands Conservancy Cultural Landscape Report, Rye (Heritage Landscapes)
 - Hamilton Grange Relocation Study, Alexander Hamilton Grange National Memorial (NPS)
 - Bellefield Estate Cultural Landscape Inventory, Home of Franklin D Roosevelt National Historic Site (NPS)
 - Val-Kill Cultural Landscape Inventory, Eleanor Roosevelt National Historic Site (NPS)
 - Sunnyside, Home of Washington Irving Cultural Landscape Report, Tarrytown (Heritage Landscapes)
 - William Floyd Estate Cultural Landscape Inventory, Fire Island National Seashore (NPS)
 - Fire Island Light Station Cultural Landscape Inventory, Fire Island National Seashore (NPS)
 - Elizabeth Cady Stanton House Cultural Landscape Inventory, Women's Rights National Historical Park (NPS)
 - M'Clintock House, Women's Rights National Historical Park (NPS)
 - Mount Zion Historic Neighborhood Cultural Landscape Report, Somers (Heritage Landscapes)
 - South Park Blocks Master Plan, Portland (MIG)
 - Lithia Park Master Plan, Ashland (MIG)
 - Dorris Ranch Master Plan, Springfield (MIG)
 - Gaiety Hollow Cultural Landscape Report, Salem (MIG)
 - Kam Wah Chung State Heritage Site Cultural Landscape Assessment, John Day (MIG)
 - Lower Gardens Rehabilitation, Lewis & Clark College, Portland (MIG)
 - Thompson's Mills State Heritage Area Implementation Plan, Shedd (MIG)
 - A.T. Smith House Cultural Landscape Assessment and Master Plan, Forest Grove (MIG)
 - A.J. Masters House Master Plan, Aloha (MIG)
 - Bush's Pasture Park and Deepwood Gardens Cultural Landscape Report, Salem (MIG)
 - North Newell Creek Cultural Landscape Assessment, Oregon City (MIG)
 - Yaquina Bay Lighthouse Landscape Accessibility and Preservation Plan (MIG)
 - Oregon Department of Forestry Cultural Landscape Assessment, Salem (MIG)
 - Camp Namanu National Register of Historic Places Nomination, Sandy (MIG)
 - Munson Valley Historic District Cultural Landscape Report, Crater Lake National Park (MIG)
- OREGON**
- Willamette Falls Cultural Landscape Report, Oregon City (MIG)



laurie matthews

ADJUNCT FACULTY, HISTORIC PRESERVATION & LANDSCAPE ARCHITECTURE |
UNIVERSITY OF OREGON

DIRECTOR OF PRESERVATION PLANNING & DESIGN | MIG

LMATTHEW@UOREGON.EDU | LAURIEM@MIGCOM.COM

- Rim Village Historic District Cultural Landscape Report, Crater Lake National Park (MIG)

PENNSYLVANIA

- Schenley Park Visitor Center Interpretive Signage, Pittsburgh (Heritage Landscapes)
- Gettysburg Cultural Landscape Inventory, Gettysburg National Military Park (NPS)
- Eisenhower Farm Cultural Landscape, Eisenhower National Historic Site (NPS)
- Highland and Schenley Park Planning Studies, Pittsburgh (Heritage Landscapes)

TEXAS

- Bassett Farms Cultural Landscape Report, Kosse (MIG)

UTAH

- Watchman Campground Landscape Management Plan, Zion National Park (MIG)

VIRGINIA

- Brandy Station Battlefield Cultural Landscape Report, Culpeper (MIG)
- Yorktown Battlefield Cultural Landscape Inventory, Colonial National Historical Park (Heritage Landscapes)
- Village of Yorktown Cultural Landscape Inventory, Colonial National Historical Park (Heritage Landscapes)
- Moore House Cultural Landscape Inventory, Colonial National Historical Park (Heritage Landscapes)

WASHINGTON

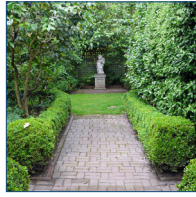
- Vancouver Barracks Cultural Landscape Design Guidelines, Fort Vancouver National Historic Site (MIG)
- Cultural Landscapes Subject Matter Expert for multiple projects, Fort Vancouver National Historic Site (MIG)
- Tipsoo Lakes Developed Area Cultural Landscape Inventories, Mount Rainier National Park (MIG)
- Reflection Lakes Developed Area Cultural Landscape Inventories, Mount Rainier National Park (MIG)
- Fort Vancouver Cultural Landscape Report, Fort Vancouver National Historic Site (MIG)
- Marblemount Ranger Station Historic District Cultural Landscape Report, North Cascades National Park (MIG)

WASHINGTON, D.C.

- Lincoln Cottage, Cultural Landscape Report, President Lincoln and Soldiers' Home National Monument (Heritage Landscapes)
- Tudor Place Cultural Landscape Report (Heritage Landscapes)
- United States Supreme Court Annex Cultural Landscape Study and Rehabilitation Plan (Heritage Landscapes)

WEST VIRGINIA

- Nuttallburg Mine Cultural Landscape Inventory, New River Gorge National Park (NPS)



laurie matthews

ADJUNCT FACULTY, HISTORIC PRESERVATION & LANDSCAPE ARCHITECTURE |
UNIVERSITY OF OREGON

DIRECTOR OF PRESERVATION PLANNING & DESIGN | MIG

LMATTHEW@UOREGON.EDU | LAURIEM@MIGCOM.COM

WYOMING

- Mason-Lovell Ranch Cultural Landscape Inventory, Bighorn Canyon National Recreation Area (MIG)
- Devils Tower Trails Cultural Landscape Inventory, Devils Tower National Monument (MIG)
- Bear Lodge Cultural Landscape Report, Devils Tower National Monument (MIG)

SELECTED PRESENTATIONS AND PUBLISHED WORKS

- *Pacific Northwest Mid-Century Modern Landscapes*, Oak Hills Community Lecture Series, 2025
- *What is the Future of Cultural Landscape Preservation?* Urban Heritage Project, Weitzman School of Design, University of Pennsylvania, 2024
- *Oregon's Cultural Landscapes: How to Better Understand and Protect These Special Places*, Bobbie Dolp Lecture Series, Lord & Schryver Conservancy, 2024
- *Landscape as Classroom and Memory: Frederick Law Olmsted's Design for The Lawrenceville School*, Olmsted 200, The Lawrenceville School, 2022
- "Repeat Photography's Practical Applications in Contemporary Landscape Planning and Design" (co-author of chapter in *Active Landscape Photography* by Anne Godfrey), Routledge Press, 2022
- *Expanding Preservation's Role in Mitigating Climate Change*, National Trust for Historic Preservation, 2021
- *Landscape as Storyteller: Linking Chronicles of Revelry, Refuge and Restraint for Four Generations of 16th Century Women to Their Home Landscapes*, Oxford University, The Gardens Trust New Research Symposium, 2019
- *Cultural Landscapes Workshop and Field Session*, Civic Center, Denver, National Trust for Historic Preservation, 2019
- *Cultural Landscapes Workshop and Field Session*, Levi Plaza, San Francisco, American Planning Association, 2019
- *Landscape Processes and Cultural Resources: Shifting Perspectives to Protect Mendocino Woodlands*, US/ICOMOS Symposium and Conference Proceedings, 2018-2019
- *Cultural Landscapes Workshop and Field Session*, Civic Center Historic District, San Francisco, National Trust for Historic Preservation, 2018
- *Clarifying Uncertainty: Field Notes from Tackling Climate Change Across the United States*, American Society of Landscape Architects, 2018
- *Revealing Spirit of Place: A Cultural Landscape Report for Willamette Falls*, Society of Architectural Historians, 2017
- *Protecting the Mendocino Woodlands*, California Planner, 2017
- *Creative Solutions for Making History Accessible and Affordable*, California Preservation Foundation, 2017
- *San Francisco Civic Center: Understanding Complex Landscapes to Inform Future Planning and Design*, California Preservation Foundation, 2016



laurie matthews

ADJUNCT FACULTY, HISTORIC PRESERVATION & LANDSCAPE ARCHITECTURE |
UNIVERSITY OF OREGON

DIRECTOR OF PRESERVATION PLANNING & DESIGN | MIG

LMATTHEW@UOREGON.EDU | LAURIEM@MIGCOM.COM

- *Shaping the Cultural Landscape of Willamette Falls*, Pints From the Past Lecture Series, 2016 and 2017
- *Landscape Processes and Cultural Resources: Shifting Perspectives to Protect Mendocino Woodlands*, A Century of Design in the Parks, 2016
- *Preserving and Interpreting Multi-Layered Landscapes*, National Trust for Historic Preservation, 2014
- *Surveying and Evaluating Historic Landscapes*, Oregon Heritage Conference, 2014
- *Shine A Light: Innovative Survey Methods and Tools for Preserving Historic Districts*, Association for Preservation Technology, 2013
- *Mendocino Woodlands: Leveraging Resources Effectively to Complete Cultural Landscape Projects for Historic Sites*, Alliance for Historic Landscape Preservation, 2012 and George Wright Society, 2013
- *Gaiety Hollow: Influences Upon Its Design*, Hallie Ford Museum of Art Lecture Series, 2011
- *What Lies Beneath: Design Techniques for Volumizing and Revealing Layers of an Archaeological Park*, George Wright Society, 2011
- *A Taste of Oregon: Cultural and Natural Resource Planning at Dorris Ranch*, George Wright Society, 2009
- *Preservation Planning and Design Toolkit for Successful Heritage Landscape Management*, Washington Recreation & Park Association Conference, 2009

- *The Emerald Necklace: Using Cultural Landscape Guidelines to Understand and Preserve Frederick Law Olmsted's Design*, Wentworth Institute of Technology, 2006
- *Cultural Landscape Preservation Toolkit*, California Preservation Foundation, 2005
- *A Circle in Time: Frederick Law Olmsted's Design for The Lawrenceville School*, 2001
- *Rain Over Kyoto*, OregonLand, 2000
- *Discovering Place and Reconnecting Memory: Overlook Estate*, 2000

TEACHING EXPERIENCE

- Instructor, Introduction to Cultural Landscapes, Historic Preservation Program/Department of Landscape Architecture, University of Oregon, 2017-present
- Instructor, History of Landscape Architecture I and II, Department of Landscape Architecture, University of Oregon, 2023-present
- Co-Instructor, Cultural Landscapes Preservation Field School Session, Pacific Northwest Field School, Fenn Ranger Station, Nez Perce National Forest, Idaho, August 2017
- Lecturer, Pacific Northwest Field School, Fisher's Bottom Homestead, Idaho, August 2014
- Lecturer, Pacific Northwest Field School, Malheur National Wildlife Refuge, Oregon, August 2012
- Co-Instructor, Mendocino Woodlands Studio, Department of Landscape Architecture, University of Oregon, Spring 2011



laurie matthews

ADJUNCT FACULTY, HISTORIC PRESERVATION & LANDSCAPE ARCHITECTURE |
UNIVERSITY OF OREGON

DIRECTOR OF PRESERVATION PLANNING & DESIGN | MIG

LMATTHEW@UOREGON.EDU | LAURIEM@MIGCOM.COM

- Graduate Teaching Fellow and Instructor, Plants, Department of Landscape Architecture, University of Oregon, Winter 1999

COMMUNITY SERVICE

- Board Member, Restore Oregon, 2020-present
- President, Oregon Chapter of the American Society of Landscape Architects, 2015-2016
- Board Member, Oregon Chapter of the American Society of Landscape Architects, 2014-2017
- Special Project Coordinator, National Register Nomination, Halprin Landscape Conservancy, 2009-2011
- Board Member, Hoyt Arboretum, 2008-2010

SELECTED AWARDS

- ASLA Council of Fellows, 2023
- Oregon ASLA, Distinguished Practitioner Award, 2022
- California Preservation Foundation, Point Reyes Lighthouse Rehabilitation, 2022
- Oregon ASLA, Award of Excellence, *Willamette Falls Cultural Landscape Report*, 2019
- Oregon ASLA, Award of Excellence, *Lithia Park Master Plan*, 2019
- California Preservation Foundation Award, *Civic Center Cultural Landscape Inventory*, 2016

- ASLA Historic American Landscape Survey, First Place, *Gaiety Hollow Cultural Landscape Report*, 2013
- Oregon ASLA Award of Excellence, *Dorris Ranch Master Plan*, 2010
- Vermont ASLA Planning & Analysis Honor Award, *Marshlands/John Jay Estate Cultural Landscape Report*, 2005
- Connecticut ASLA Communication Award, *Marshlands/John Jay Estate Cultural Landscape Report*, 2003
- National ASLA, Research Award, *A Circle In Time: Frederick Law Olmsted's Design for The Lawrenceville School*, 2002